

# Scènes du Grütli

## Technical rider

2025/26



Technical management

Julien Okoué Métogo

+41 22 888 44 82

[julien@grutli.ch](mailto:julien@grutli.ch)

Stage management

Daniel Emery

[daniel@grutli.ch](mailto:daniel@grutli.ch)

# Le Grütli

Le Grütli is a cultural venue with two spaces for living arts residencies, productions and shows and two more smaller spaces for residencies and off stage events.

Our theater is part of *La Maison des Arts du Grütli*, a pluri-disciplinary cultural center.

On the *2nd floor* the artists and crew have access to coffee, tee, a fridge and a microwave. No kitchen.

## Schedule

9:00-13:00

14:00-18:00

19:00-23:00

The technical team will arrive two hours before each show.

The schedule can be modified but must be approved by the technical manager prior to your arrival.

## Security

All props and set elements used on stage must comply with the fire security rules and must be in possession of a fireproof certificate. See [here](#)

Authorisation for naked flames and other pyrotechnics on stage must be cleared with the technical management at least 60 days prior to the shows. A person from the fire brigade must be present in the venue for any performance involving flames and pyrotechnics.

# Organisation

Please send your technical rider, set up, lighting plot and other technical requirements adapted to the venue at least one month before your arrival.

For optimal crew and working conditions please advise the management of your schedule at least two month prior to your arrival.

# Access

Switzerland not being part of the EU, you will need a Carnet ATA for temporary export and import.

See [here](#)

The Grütli doesn't have any parking spaces, but a temporary loading/unloading access is available.

Call the manager prior to your arrival for instructions.



# Basement venue

Audience: 156 seats

Tier of seats can be altered for a bi-frontal or quadri-frontal setting.

Surface 230m<sup>2</sup>

Stage depth 14.5m

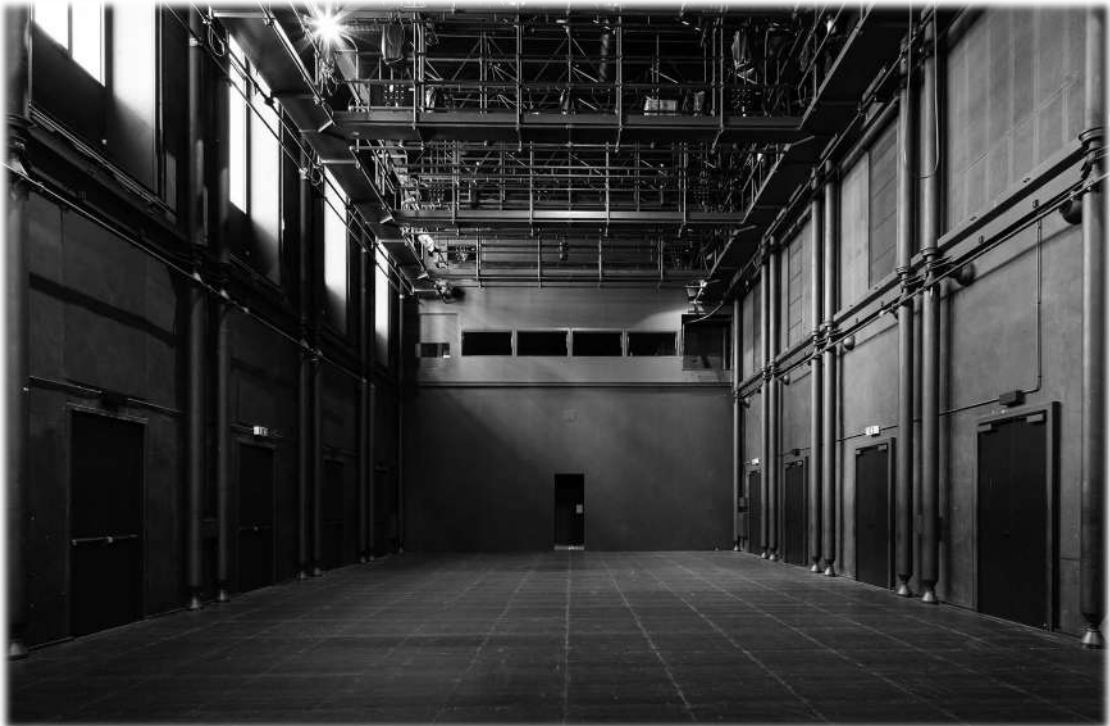
S. d. without tier seating 23.65

Width wall to wall >10.35m  
between columns > 9.80m

Height under grid 7.70m

Under stage height 1.10m, possibility to open up certain areas through access hatches.

(maximal charge 500kg/m<sup>2</sup>, drilling forbidden)



## Unloading access

Building access ramp L: 1.50m  
Lift 3800kg P: 3.90m / L: 1.37m / H: 2.42m  
Double door to venue L: 1.34m / H: 2.40m

## Dressing rooms

1 dressing rooms with shower for 8 people  
1 dressing room RMP with shower for 6 people  
2 washers, 1 dryer, 2 steams clothing care system, 2 basic sawing kits

## Grill

10 overfly bridges at grill height, width: 1.20m  
16 motorized pipes max 250kg each, L: 7.20m

## Lighting

Dimmers 2,4kW	192 ETC Sensor 3
Dimmers 6kW	6 ETC Sensor 3
Dimmers fluo	2 Digitour 6S
Lighting board	1 ETC GIO@5

## Sound

Digital mixing desk	1 Midas M32r
Amplification 2×500W/4Ω	2 QSC 1700
Amplification 2×650W/4Ω	2 QSC usa 1310
Amplification 2×1250W/4Ω	2 Lab Gruppen PLM 5K44



# Second floor venue

Audience seating: 97

Total superfcy

190m<sup>2</sup>

Stage depth  
between columns >

12m Width  
9.85m

wall to wall >  
Height under grill

10.5m  
4m



## Unloading access

Building access ramp	L: 1.50m
Lift 3800kg	P: 3.90m / L: 1.37m / H: 2.42m
Largest access door to this space	L: 1.34m / H: 2.40m

## Dressing rooms

1 dressing room located at the back of the stage, access is through 2 big wooden sliding doors.

## Grill

Fixed pipes and use of the building structure pipes.

## Light

Dimmer 3kW	36 ETC Alex Mx
	Max. power available 48kW ▲
Lighting board	1 ETC Element 2

## Sound

Digital desk	1 Behringer X32 Compact
Amplification 2×425W/8Ω	2 ACR 1300
Speakers	4 Kling & Freitag CA1001-sp
Subwoofers	2 Kling & Freitag SW 115SE-SP

# Gueuloir

Power 2×32A Three-phase = 30kW

Superficy	62m <sup>2</sup>
Depth	14.5m
Width	4.25m
Heigh	3.4



# Hallway 2nd floor

Power 2x10A

Superficy

105m<sup>2</sup>

Depth

25.20m

Width

4.35m

Height

Highest point: 4.85m

Lowest point : 3.55m



# Terrasse

Power

2x13A / 1x16A / 1x32A

Superficy

40m<sup>2</sup>

Depth

9.30m

Width

4.35m

Height

5.15m



# Lighting equipment

ETC Desire D60 Lustr+	(16°/ 25°/ 45°/75° lenses)	24
ETC Source Four LED Series 2	25°-50°	12
Fresnel 5000W	Bambino/Pollux	5
Fresnel 2000W	Castor	10
Fresnel 650W	Coemar	9
Fresnel 650W	Prelude Strand	5
PC 1200W <i>hammered lens</i>	Cantata	60
PC 650W	Coemar	7
Profile 2000W	Robert JULIAT 713SX	6
Profile 2000W	Robert JULIAT 714S	5
Profile 2000W	Robert JULIAT 714SX	4
Profile 1200W	Robert JULIAT 613SX	2
Profile 1000W	Robert JULIAT 614S	15
Profile 1000W	Robert JULIAT 612S	8
Profile 750W	ETC S4 Zoom 25/50°	10
PAR 64 1000W	Thomas	70
PAR 36 / F130W		15
Cyc. flood 1000W	ADB ACP 1001	20
HMI 2500W (without jalousie)	Luxarc	1
Follow spot HMI 750W	JULIAT	1
Svoboda 2250W	ADB	8
BT 250W (low tension)		10
Fluo 36W	TL JULIAT, connecteur Wiland	28
Stroboscope	Atomic 3000	1
Led Garland	50m.	3
Fog machine	Look Unique 2.1	1
Fog machine	Look Cobra 3.1	1
Smoke machine	Look Viper NT	1
Compact low fog machine	BeamZ LF1500	1
Barn doors	PC Cantata 1200W	59
Barn doors	Fresnel Castor 2000W	10
Barn doors	Fresnel Bambino 5000W	5
Iris. Profile	Robert Juliat	8
Iris. Profile	ETC S4	12
Gobo holders Profile	ETC S4	8
Gobo holders Profile	Robert JULIAT 2000W	11
Gobo holders Profile	Robert JULIAT 1000W	15
Light stands	Robert JULIAT	5
Stand coupling pipe	Robert JULIAT	2
Low floor stands		25
Controller midi USB	Korg nanoKONTROL 2	1
Transmitter Wifi / DMX	ADJ WILFY EXR Battery	2
ETC	Nomad/Gadget 2	1
Splitter DMX	Enttec D-Split	1
Dimmer pack	Alphapack 3 10A	1
Node DMX/RJ45	ChamSys GeNetix GN10	4

# Sound

Digital desk	Berhinger X32/Midas M32r/QSC Touch mix8	1
Stage box	S16	2
Stage box	DL 32	2
Amplification 2x1200W	LAB IPD2400	2
Amplification 2x200W	LAB E4: 2	2
Amplification 2x150W/4Ω	ACR 400	2
Amplification 2x100W/8Ω	ACR 200	1
Speakers 12"	Kling & Freitag Gravis 400W 8Ω	4
Speakers 12"	Kling & Freitag CA 1201 300W 8Ω	4
Speakers 10"	Kling & Freitag CA 1001SP	8
Speakers 6"	Kling & Freitag CA106 120W 16Ω	4
Sub 2x18	Kling & Freitag SW118E SP	2
Sub 15	Kling & Freitag SW115E	2
Speakers	FBT Jolly 5ba 60W+20W	4
Speakers	ACR Monitor 3, 300W/8Ω	2
Speakers	ACR Disco-Baby version Pro, 150W/8Ω	2
Sub 2x15	Audio Performance	2
Speakers	Fostex SP11	2
Speakers 6"	Seeburg X2 - 250/8 Ω	4
Speakers 10"	Seeburg X4 - 350W/8 Ω	2
Condenser mic	Neumann KM184	4
Condenser mic	AKG C1000S	1
Condenser mic	CK8 AKG + AKG C451E	2
Condenser mic	AKG C401	1
Condenser mic	MBHO MBP603/200	1
Condenser mic	Behringer C2	2
Condenser mic	Behringer B2 Pro	1
Dynamic mic	Shure SM58	6
Dynamic mic	Shure SM57	4
Dynamic mic	Sennheiser e835	4
Dynamic mic	Sennheiser e835S	1
Dynamic mic	Sennheiser e845	1
Dynamic mic	Sennheiser MD 431II	2
Dynamic mic	Sennheiser BF 541	3
Dynamic mic	Sennheiser BF 531	1
Dynamic mic	Sennheiser e906	1
Surface microphone	Shure Beta 91	1
Wireless mic	Voice Technology VT-701 MKII	4
Wireless mic	Sennheiser ME4-N (cravate)	4
Wireless mic	Shure 93 (sans connecteur Sennheiser)	2
Wireless mic	DPA 4066 (Beige)	6
Wireless mic	DPA 4066 (Black)	2

Wireless mic	DPA 4060	1
Wireless mic	SKM 300 G4	1
Wireless receiver	Sennheiser EW300 G3	7
Wireless receiver	Sennheiser EW300 G4	3
Wireless transmitter	Sennheiser SK300	5
Wireless transmitter	Sennheiser SKM300-835	1
In ear	IEM G4 Twin B	1
In ear	EK 2000 IEM	3
DI-box	BSS AR116	1
DI-box	BSS AR133	9
Intercom	Clearcom DX4	1
Headphone Silent-audio	GO-ON Rf-309	100
Charger	GO-ON 20 plug	3
Transmitter	GO-ON Tx-50RF	2
Portable Speaker	JBL Xtreme 4	4
Computer	MacBook Pro retina 15"	2
	2,5Ghz, i7, 16 Go RAM	
	+ Ableton Live 9 standard	
	Lenovo v15 Gen 4	1
Soundcard	UMC 1820	1
Soundcard	UMC 204HD 2in/4out	2
Soundcard	MOTU 828 MKII	1
Soundcard	MOTU 828 X	1
Analogic Desk	Behringer Xenyx 802	4
Analogic Desk	Behringer Xenyx 502	1
Analogic Desk	Behringer Xenyx 1202	1
Controller USB DAW	Behringer X-Touch Compact	1
<b>Accessories</b>		
Speaker stands		7
Mic stands		18
Mic stands	Round base 80cm	3
Mic stands	Round base 30cm	3
Mic stands	Round base 10cm	3

# VIDEO

Video projector 15000lum	BARCO I600 4k15	1
Video projector 10000lum	Panasonic PT-DZ110XE	1
Video projector 5400lum	Panasonic PT-RZ570BE	1
Video projector 4200lum	NEC M403-H	2
Lens ratio 1.4-1.8:1	Panasonic ET-D75LE1	1
Lens ratio 0.8:1	Panasonic ET-D75LE5	1
Lens ratio 0.65-0.8:1	BARCO IDL	1
Lens ratio 1.4-2.1:1	BARCO IDL	1
Camcorder	Sony Handycam HDR-CX405	1
Camcorder	Sony Handycam HDR-CX240E	2
Camcorder 4K	Sony Handycam PXW-Z90	2
Converter HDMI-SDI (paire)	BlackMagic	4
Converter HDMI-SDI (Bidirectional)	BlackMagic 3G	3
Converter HDMI-SDI	BlackMagic 6G	2
Converter HDMI-RJ45 (paire)	Kramer PT-871/2XR-KIT	1
Converter RJ45-DVI (paire)	Kramer	1
Video mixer	Atem mini Pro	1
Splitter Speaka HDMI 2IN/4OUT		1
Shutter DMX Wahlberg		1
Converter optical to HDMI	Black Magic	2
Converter HDMI to optical	Black Magic	2
Screen on frame, with adjustable feet:		
	Kimex, L : 4.07m / H : 2.30m	1
	Kimex, L : 6.10m / H : 3.43m	1

# Electricity

Powerstation	EcoFlow DELTA 3 Max plus (2kW/h)	1
--------------	----------------------------------	---

# Stage set

## Basement Venue

### **Black stage velour**

Backdrop	L: 10m × H: 7.7m	1
Midway backdrop	L: 6 × H: 7.7m	2
Legs	L: 2.30m × H: 7.7m	12
Frises	L: 10m × H: 2m	6
Frises	L: 10m × H: 1m	2

### **Red stage velour**

Backdrop	L: 10.50m × H: 7m	3
Backdrop	L: 4.80m × H: 3.30m	2
Sliding curtain rails	10m	

## 2nd floor Venue

### **Black stage velour**

Velours	L: 2.40m × H: 3.94m	6
Velours	L: 2m × H: 4.08m	10
Backdrop	L: 10.50m × H: 4.75m	1
Frise	L: 7.25m × H: 1m	1
Legs	L: 1.50m × H: 4m	6
Midway backdrop	L: 6 × H: 4.1m	2
Sliding curtain rails	10m	

Dancefloor Black/White	L: 9.7m × H: 1.6m	14
------------------------	-------------------	----

Cyclorama light grey	L: 9.30m × H: 6.15m	1
----------------------	---------------------	---

Cyclorama Opera Milky white	L: 7.00m × H: 4.40m	1
-----------------------------	---------------------	---

	L: 9.00m × H: 6.00m	1
--	---------------------	---

Cyclorama dark grey PVC	L: 5.78m × H: 3.95m	1
-------------------------	---------------------	---

Stage risers	1.90m × 0.95m	8
--------------	---------------	---

Stage risers	0.95m × 0.95m	12
--------------	---------------	----

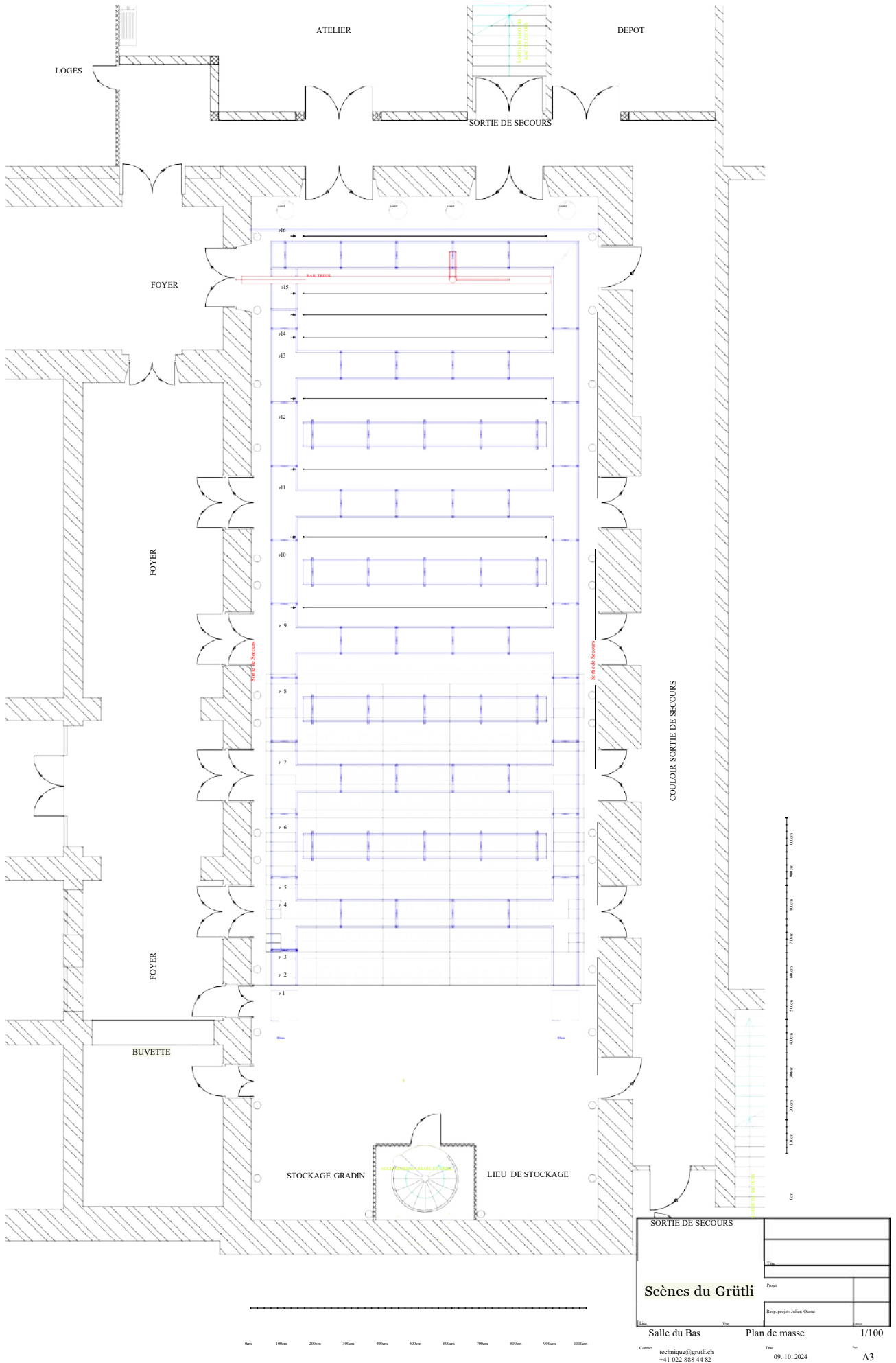
Stage riser feet  
H: 20cm  
H: 40cm  
H: 60cm

Hoist motor	CMU: 250kg	4
Triangular truss 48mm	3m	4
Triangular truss 48mm	2m	2
Triangular truss angle 48mm		4

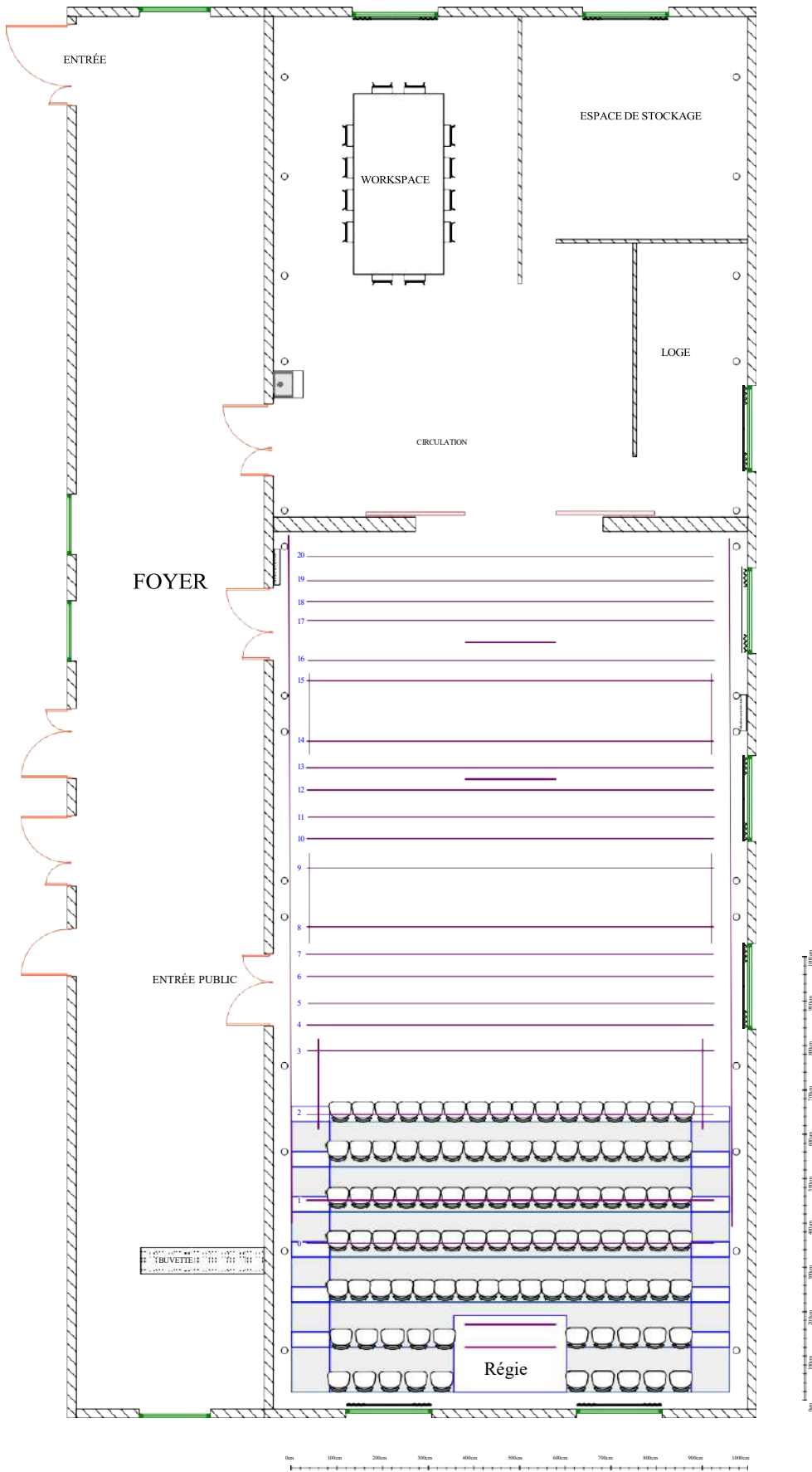
Suspension system

Reutlinger Rigging Holders, Clamp	6mm	20
Reutlinger Rigging Holders, Ring bolt	6mm	10
Reutlinger Rigging Holders, Clamp	5mm	6
Reutlinger Rigging Holders, Ring bolt	5mm	6
Reutlinger Rigging Holders + Ring		30
Cables 5mm for Reutlinger	5m	12
Cables 5mm for Reutlinger	3m	12
Cables 6mm for Reutlinger	7m	10
Cables 6mm for Reutlinger	5m	20
Cables 6mm for Reutlinger	3m	20
Black aluminium pipe 48mm	5m, 4m, 3m, 2m	10 of each size

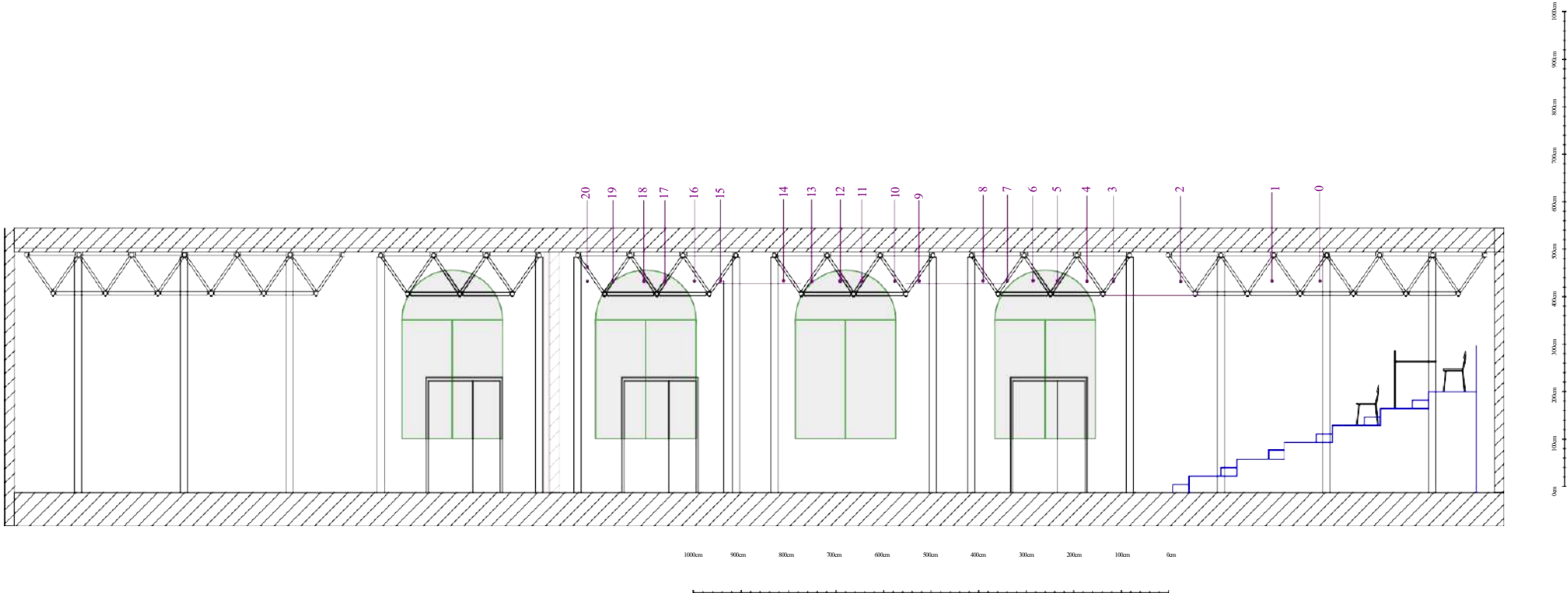








Scène du Grütli		Titre	
		Projet	
		Resp. projet Julien Okoué	
Lieu	Voir	Plan de masse	Echelle
Salle du Haut			1/100
Contact technique@grutli.ch +41 022 888 44 82		Date	Page
		04. 10. 2024	A3



Second floor venue

Scènes du Grütli		Titre	
		Projet	
Lieu Salle du Haut		Resp. projet: Julien Okoué	
Contact technique@grutli.ch +41 022 888 44 82		Date 03.10.2024	
Vue Coupe		Echelle 1/100	
		Page A3	